



## Main Features

- ◆ 10.1" WXGA 1280x800 400 nits LED panel
- ◆ 5 points projected capacitive touch with Full IP65 protection
- ◆ 3-Position Enabling switch & E-Stop Button
- ◆ EMC (IEC/EN 61600-2/4) compliance
- ◆ System frame ground protection(GPE) design

## Product Overview

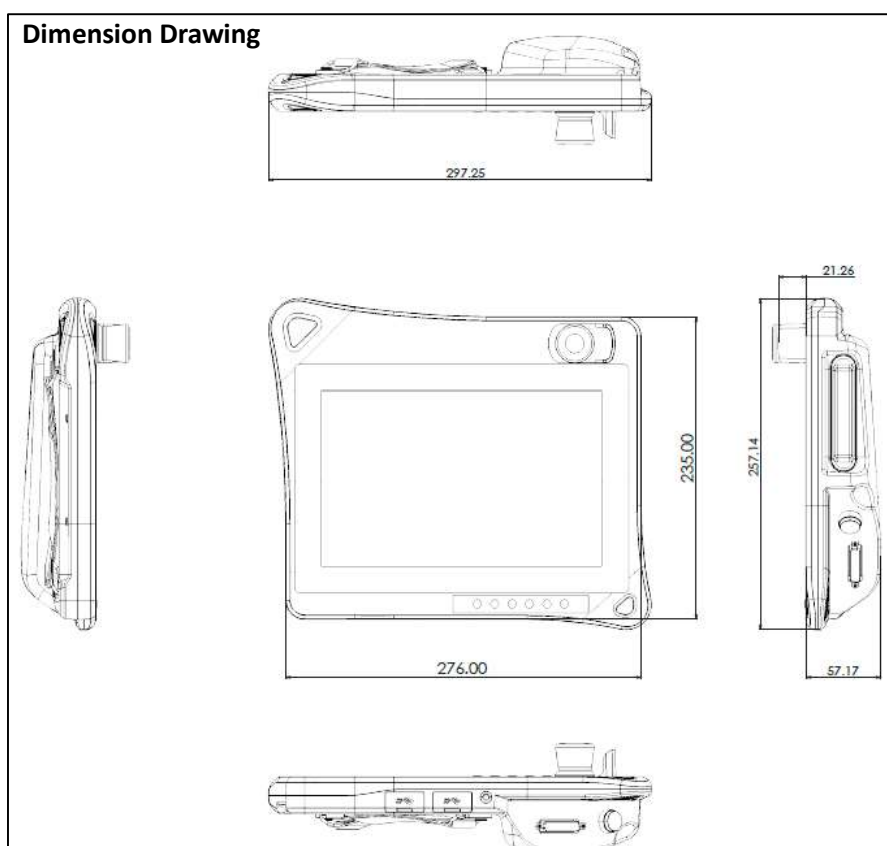
TP-100-2 is handheld operating teach pendant features an ergonomic housing with a safety elements, 10.1" WXGA resolution Panel and Multi-Touch P-Cap. The handheld control unit is greatest comfortable to used and also support left-hander.

## Specification

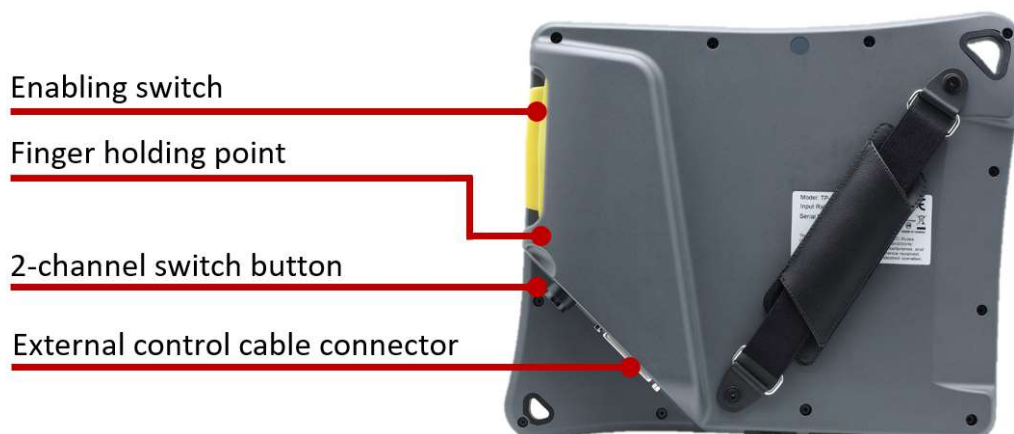
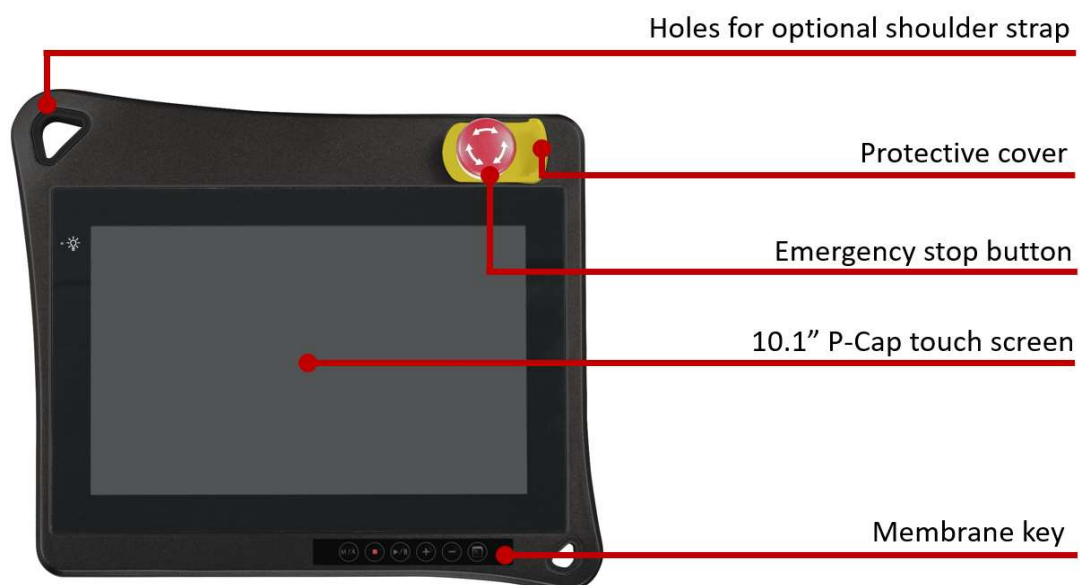
| Technical Data | TP-100-2  | Technical Data | TP-100-2   |
|----------------|---|----------------|--|
| Panel          | <ul style="list-style-type: none"> <li>- 10.1", 16:10, WXGA, 1280 x 800</li> <li>- Luminance: 400 cd/m<sup>2</sup></li> <li>- Contrast ratio: 800:1</li> <li>- LCD color: 16.7M</li> <li>- Viewing angle: 89 (U), 89 (D), 89 (L), 89 (R)</li> <li>- Backlight: LED</li> </ul> | Interface      | <ul style="list-style-type: none"> <li>- Data back-up: 2 x USB 2.0</li> <li>- Control connector: HDB-44 female</li> <li>&gt; Removable HDB-44 control cable that cable length: 3M / 5M /10M / 20M (Optional)</li> <li>&gt; Including power, E-stop buttons, 3-Position enabling switch, button switch, USB 2.0 and HDMI signals</li> </ul> |
| Touch          | <ul style="list-style-type: none"> <li>- Touch: 5 points P-Cap</li> <li>- Touch light transmission: 87%</li> <li>- Touch interface: USB</li> <li>- Anti-scratch surface: 7H hardness</li> </ul>   | Ratings        | <ul style="list-style-type: none"> <li>- Power supply voltage: 24 Vdc (19.2 to 28.8 Vdc)</li> <li>- Current consumption:                             <ul style="list-style-type: none"> <li>&gt; TP-100-2 0.625A at 24Vdc (max.)</li> </ul> </li> </ul>  |

| Technical Data     | TP-100-2   | Technical Data | TP-100-2  |
|--------------------|--|----------------|---|
| Safety Elements    | <ul style="list-style-type: none"> <li>- Emergency Stop Button</li> <li>&gt; 2 NC channels, B10d=130,000</li> <li>&gt; Contact function: latching</li> <li>&gt; Reset: by rotating</li> <li>-3-Position Enabling Switch</li> <li>&gt; 3 channels 2NO &amp; 1 NC, B10d=100,000</li> </ul> | Mechanical     | <ul style="list-style-type: none"> <li>- Dimension: 297.3 x 257.2 x 57.2 mm (78.5mm including E-stop button)</li> <li>- Weight (without external control cable): &gt; TP-100-2 1.5Kg</li> <li>- Front bezel: aluminum magnesium alloy; color: Black</li> <li>- Back cover: ABS+PC; color: Pantone 432C</li> <li>- IP protection class: Full IP65</li> </ul> |
| Operating Elements | 2-position button switch (1NO & 1NC)   | Environment    | <ul style="list-style-type: none"> <li>- Operating temperature: 0°C to 50°C</li> <li>- Storage temperature: -20°C to 75°C</li> <li>- Operating humidity: 10%~90% relative humidity, non-condensing</li> <li>- Vibration resistance/shock-proof/free-fall according to EN 61131-2</li> </ul>   |
| System             | <ul style="list-style-type: none"> <li>- TP-100-2: HDMI input</li> <li>- USB 2.0 upstream</li> </ul>   | Certifications | <ul style="list-style-type: none"> <li>- CE (EN 61000-6-2; EN61000-6-4) for installation in industrial environments</li> <li>- FCC Class A</li> </ul>   |

**Dimension Drawing**



## Function and Ergonomic design



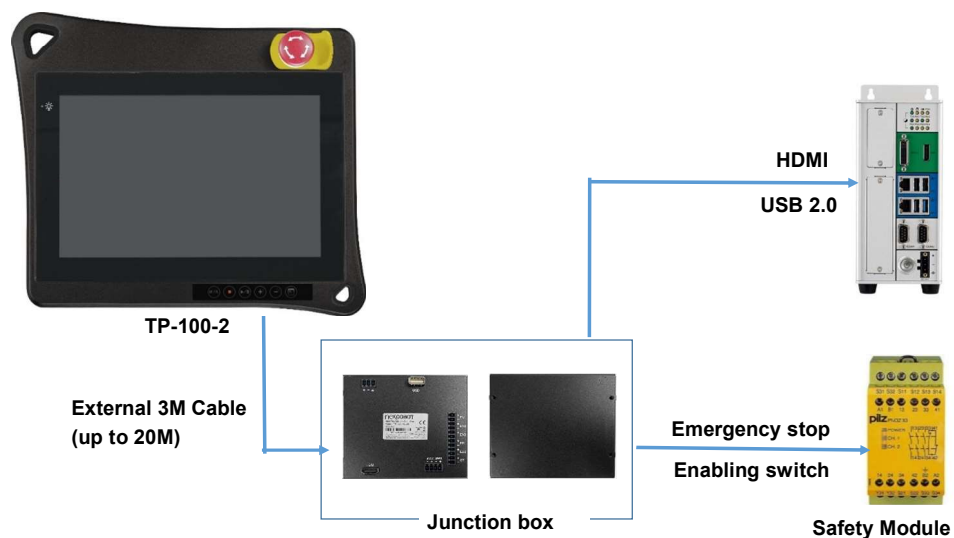
## Membrane Keys



The TP-100-2's membrane keys are located at the lower-right of the teach pendant, each membrane key is mapping to the real-keyboard signal, review the key definitions below:

| Key Definition    | Defined Keyboard Mapping |
|-------------------|--------------------------|
| <b>M/A</b>        | [Ctrl] + [Shift] + [ m ] |
| <b>Stop</b>       | [Ctrl] + [Shift] + [ s ] |
| <b>Play/Pause</b> | [Ctrl] + [Shift] + [ p ] |
| <b>+</b>          | [Ctrl] + [Shift] + [ ] ] |
| <b>-</b>          | [Ctrl] + [Shift] + [ [ ] |
| <b>Error Log</b>  | [Ctrl] + [Shift] + [ e ] |

## Connection example



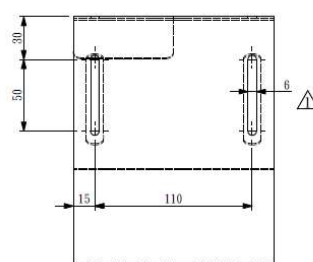
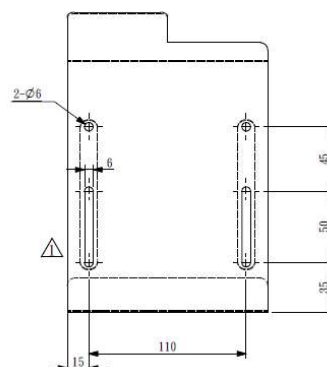
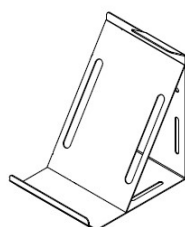
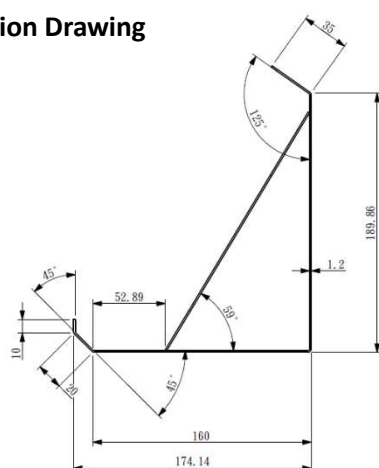
## Junction Box



## TP-100 Holders (Option)



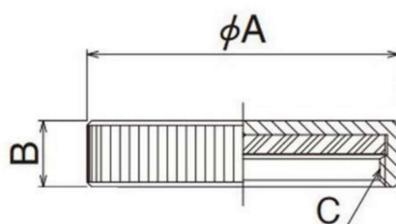
### Dimension Drawing



## Cap of Circular connector for TP-100-2 (Option)



Dimension Drawing



| $\phi A$ | B   | C     |
|----------|-----|-------|
| 33       | 7.5 | M30×1 |

## Ordering Information

- TP-100-2 (P/N: 10IH0010010X0)  
10.1" multi-touch Teach pendant display
- TP-100-HD-JB (P/N: 10IH0010011X0)  
TP-100-2 Junction Box
- TP-100-2 circular connector cable (P/N: 6030000494X00)  
Connector to Junction box (30cm)
- (Option) TP-100-2 External 3M Cable (P/N: 6030000491X00)
- (Option) TP-100-2 External 5M Cable (P/N: 6030000492X00)
- (Option) TP-100-2 External 10M Cable (P/N: 6030000499X00)
- (Option) TP-100-2 External 20M Cable (P/N: 6030000493X00)  
TP-100-2 External Cable
- (Option) TP-100 Holders (P/N: 98ROBO000011F)  
Holder for TP-100
- (Option) Cap of Circular connector for TP-100-2 (P/N: 8650600000X01)  
Cap for TP-100-2